

# MATERIAL LINES

silentlab



Our acoustic pods GEN4 combine aesthetics, functionality, and comfort thanks to carefully selected materials. The upholstery ensures excellent acoustics. We offer the elegant Fabric 1, which is easy to maintain, and Fabric 2, made of natural wool with a warm texture. The SPARK acoustic rooms feature a durable steel shell with a powder-coated finish for long-lasting performance.





# FABRIC 1

GEN4



BO04



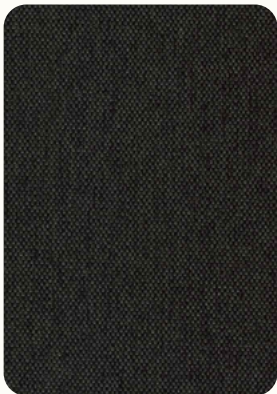
BO06



BO34



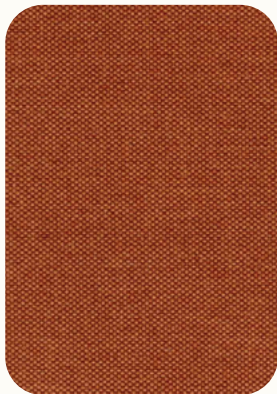
BO74



BO56



BO37



BO39



BO15

## Technical details

composition	100 % polyester
weight	350 g/m <sup>2</sup>
width	140 cm
abrasion resistance	> 100 000 martindale

All intellectual property rights („Rights”), whether registered or not, relating to any content, texts, photographs, images, logos, instructions, designs, technical solutions, etc. (“Content”) are the property of SilentLab s.r.o. (“Owner”) and any interference with these Rights to any Content or part thereof without the prior express and written consent of the Owner is not permitted. Any use of the Content not expressly authorized in writing in advance, with the exception of internal and non-commercial use of the unmodified Content for the purposes of the customer’s own order, is considered an infringement of the Owner’s Rights. In particular (not exclusively), any reproduction, change, addition, merger or other modification of the Content is prohibited without the prior express written consent of the Owner.

The final product configuration may differ from the versions shown in the photographs.

version 2026.1

# FABRIC 2

GEN4



W06



W34



W36



W94



W27



W18



W109



W25

## Technical details

composition	70 % recycled sheep wool, 30 % polyamide
weight	400 g/m <sup>2</sup>
width	150 cm
abrasion resistance	> 100 000 martindale

All intellectual property rights („Rights”), whether registered or not, relating to any content, texts, photographs, images, logos, instructions, designs, technical solutions, etc. („Content”) are the property of SilentLab s.r.o. („Owner”) and any interference with these Rights to any Content or part thereof without the prior express and written consent of the Owner is not permitted. Any use of the Content not expressly authorized in writing in advance, with the exception of internal and non-commercial use of the unmodified Content for the purposes of the customer's own order, is considered an infringement of the Owner's Rights. In particular (not exclusively), any reproduction, change, addition, merger or other modification of the Content is prohibited without the prior express written consent of the Owner.

The final product configuration may differ from the versions shown in the photographs.

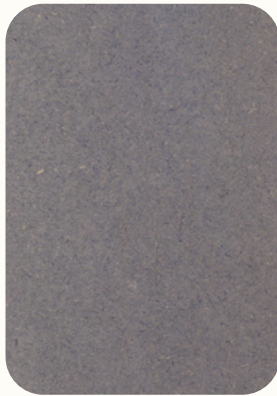
version 2026.1

# SOLID

## GEN4 – EXTERIOR



White grey



Grey



Chocolate  
Brown



Yellow

## Technical details

composition

through-coloured MDF board

All intellectual property rights („Rights”), whether registered or not, relating to any content, texts, photographs, images, logos, instructions, designs, technical solutions, etc. („Content”) are the property of SilentLab s.r.o. („Owner”) and any interference with these Rights to any Content or part thereof without the prior express and written consent of the Owner is not permitted. Any use of the Content not expressly authorized in writing in advance, with the exception of internal and non-commercial use of the unmodified Content for the purposes of the customer’s own order, is considered an infringement of the Owner’s Rights. In particular (not exclusively), any reproduction, change, addition, merger or other modification of the Content is prohibited without the prior express written consent of the Owner.

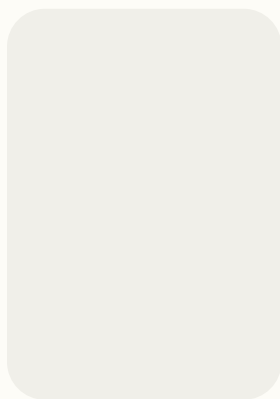
The final product configuration may differ from the versions shown in the photographs.

version 2026.1

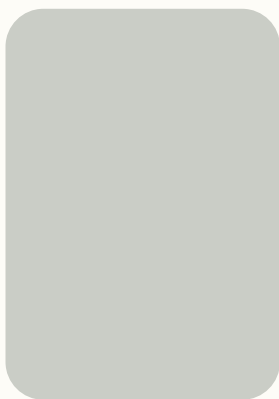


# POWDER COATED STEEL

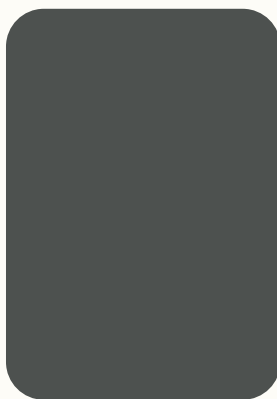
## SPARK – EXTERIOR



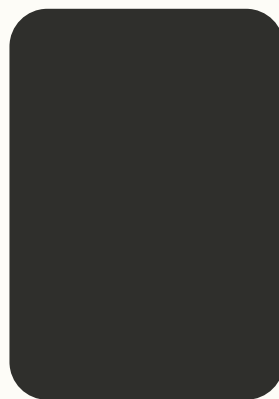
RAL 9016  
(white)



RAL 9018  
(silky grey)



RAL 7043  
(dark grey)



RAL 9005  
(carbon black)



RAL 1018  
(spring yellow)



RAL 4002  
(smooth red)



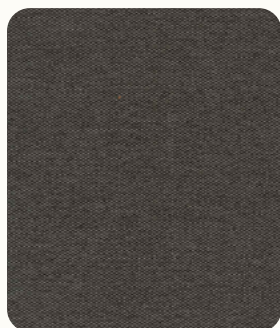
RAL 6021  
(delicate green)



RAL 5009  
(moody blue)

# UPHOLSTERY

## SPARK – INTERIOR



BO36

All intellectual property rights („Rights”), whether registered or not, relating to any content, texts, photographs, images, logos, instructions, designs, technical solutions, etc. („Content”) are the property of SilentLab s.r.o. („Owner”) and any interference with these Rights to any Content or part thereof without the prior express and written consent of the Owner is not permitted. Any use of the Content not expressly authorized in writing in advance, with the exception of internal and non-commercial use of the unmodified Content for the purposes of the customer’s own order, is considered an infringement of the Owner’s Rights. In particular (not exclusively), any reproduction, change, addition, merger or other modification of the Content is prohibited without the prior express written consent of the Owner.

The final product configuration may differ from the versions shown in the photographs.

version 2026.1

# OTHER MATERIALS

## GEN4

### FRAME AND DOOR HANDLE



Oak



Oak (black)

### CARPET



Premium carpet  
(anthracite grey)

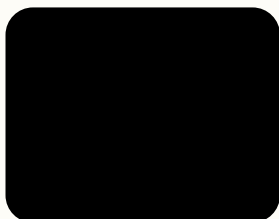


Essential carpet  
(steel grey)

### TABLE

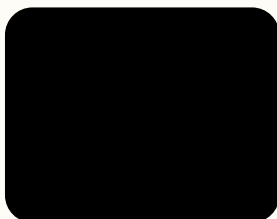


Oak



Feet (black metal)

### SEATING

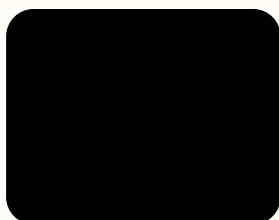


Feet (black metal)

### HEIGHT ADJUSTABLE STOOL



Fabric



Feet (black metal)

All intellectual property rights („Rights“), whether registered or not, relating to any content, texts, photographs, images, logos, instructions, designs, technical solutions, etc. („Content“) are the property of SilentLab s.r.o. („Owner“) and any interference with these Rights to any Content or part thereof without the prior express and written consent of the Owner is not permitted. Any use of the Content not expressly authorized in writing in advance, with the exception of internal and non-commercial use of the unmodified Content for the purposes of the customer's own order, is considered an infringement of the Owner's Rights. In particular (not exclusively), any reproduction, change, addition, merger or other modification of the Content is prohibited without the prior express written consent of the Owner.

The final product configuration may differ from the versions shown in the photographs.

version 2026.1

# OTHER MATERIALS

## SPARK

### FRAME AND DOOR HANDLE



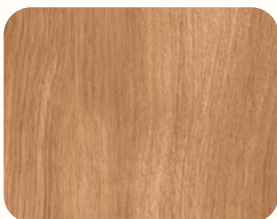
Beech (black)

### CARPET

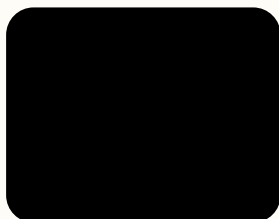


Essential carpet  
(steel grey)

### TABLE



Oak

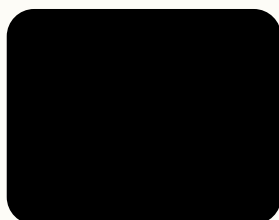


Feet (black metal)

### HEIGHT ADJUSTABLE STOOL



Fabric



Feet (black metal)

All intellectual property rights („Rights”), whether registered or not, relating to any content, texts, photographs, images, logos, instructions, designs, technical solutions, etc. (“Content”) are the property of SilentLab s.r.o. (“Owner”) and any interference with these Rights to any Content or part thereof without the prior express and written consent of the Owner is not permitted. Any use of the Content not expressly authorized in writing in advance, with the exception of internal and non-commercial use of the unmodified Content for the purposes of the customer’s own order, is considered an infringement of the Owner’s Rights. In particular (not exclusively), any reproduction, change, addition, merger or other modification of the Content is prohibited without the prior express written consent of the Owner.

The final product configuration may differ from the versions shown in the photographs.

version 2026.1